

Mrs. Kelly Russell and all members of the NFS:

FEB/15/2008

Thank's for all the assistance given to the Buffalo Mountain Flyers over the last twenty years. We, as pilots, have a special love for the Ouachita National forest, and I believe we are a positive asset to it. The pilots are afforded an awesome view as we fly here above the Talimena Drive throughout the year. The present launch was proposed and marked in one afternoon. Over the last twenty years we have discovered things that were never thought of at the beginning of our special use permit. The flying community has changed, we now have Paragliders in our group. They came along in the mid eighties and have become the fastest growing part of the USHPA. In just the last two years we have seen our small landing field double in size, allowing us to lower our rating requirements. Now more pilots are allowed to fly here. We have an excellent safety record flying here for the last twenty years, only minor injuries have occurred. However, we still want to improve our safety record and increase the use of our special use permit. We also would like to correct other issues that our flying activity has brought along the drive.

This letter is to propose a new launch area located close to the north end of Panorama Bowl. We (Buffalo Mountain Flyers) have searched this area for a better and safer launch and we believe to have found that special place. We believe this proposed site will solve all the issues the NFS may have with our activity and greatly enhance the safety of our flying.

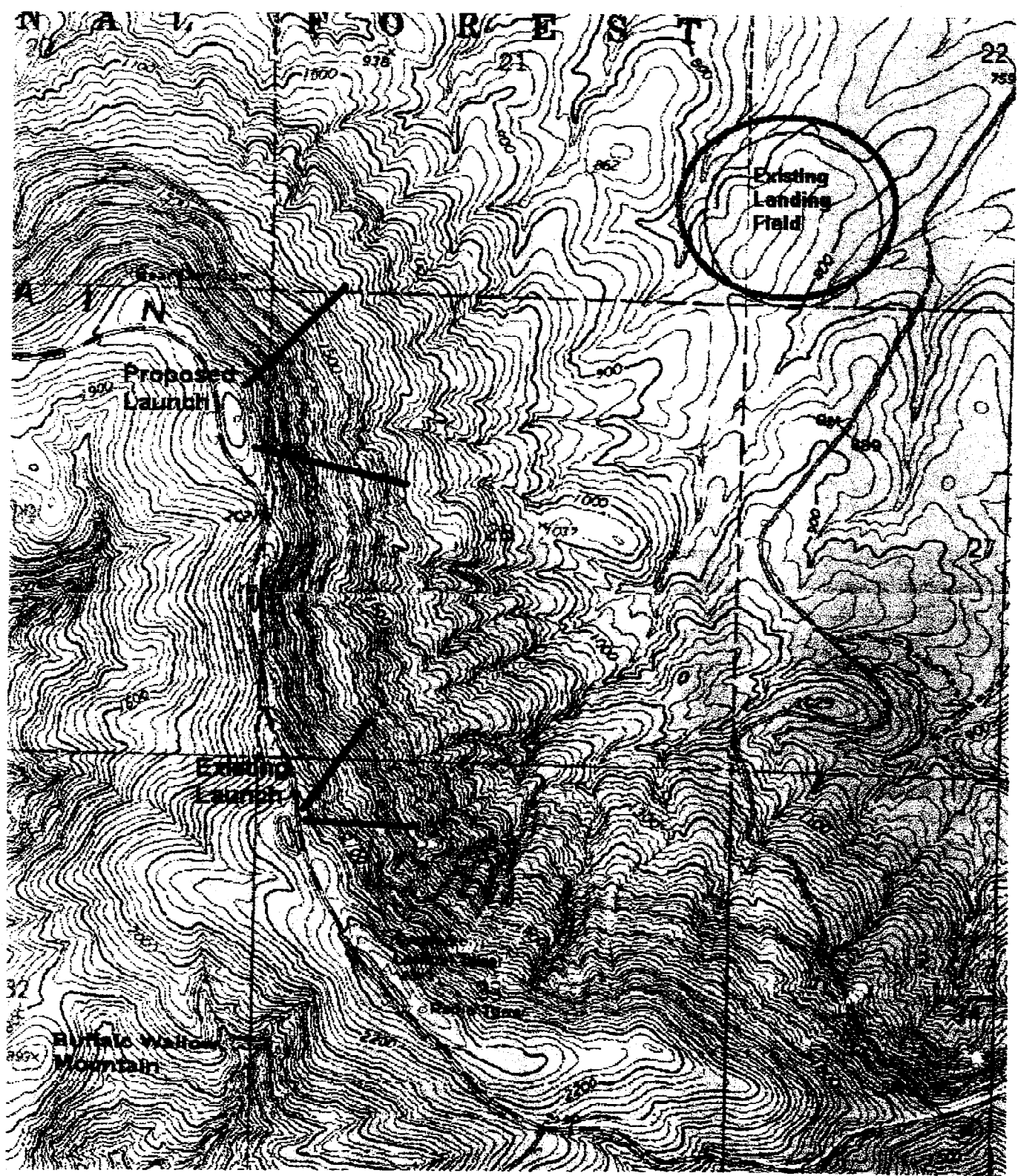
This new site would allow Paragliders to fly, knowing the landing field ( at our outer limits) would be a quarter mile closer than the old site.

This new site will be out of sight of tourists along the drive, along with our set up, launching and parking.

This new site will be safer for us to launch, the area is a lot steeper and located out toward the end of the bowl away from turbulence created by a northerly component in wind direction.

The new site would be a jewel for the NFS and all Free Flight Pilots in the central United States. All of Arkansas State Park flying sites cannot allow Paragliding as the landing fields are too far away from their launches. With the new proposed launch site, our use of the area will more than double. We will still soar above the same part of the drive and tourist will still be able to watch the gliders soar above them. Please look at the included maps and if there are any questions or concerns please let us know and we would be glad to work with you to resolve them. The decision for choosing this new site has been evolving for the last 6 to 10 years. The site is supported by all of the BMF pilots. We have flown Panorama for over 20 years and understand it's wind as no one else. This new site will increase our safe use in the National Forest and enhance the tourist experience along the drive.

Dave Morton   
Vice-President Buffalo Mountain Flyers



EAST ↑

ELEV 2000'

164 paces = 492'

54 paces = 164'

100 paces = 300'

CLEAR THIS AREA  
SUITABLE FOR LANCHING

Remove fence  
indicated  
by ⊗

SELECTIVE CUTTING  
FOR ± 10 vehicle  
PARKING

TALIMINA DRIVE

ELEV - 2100'

Fence line → X

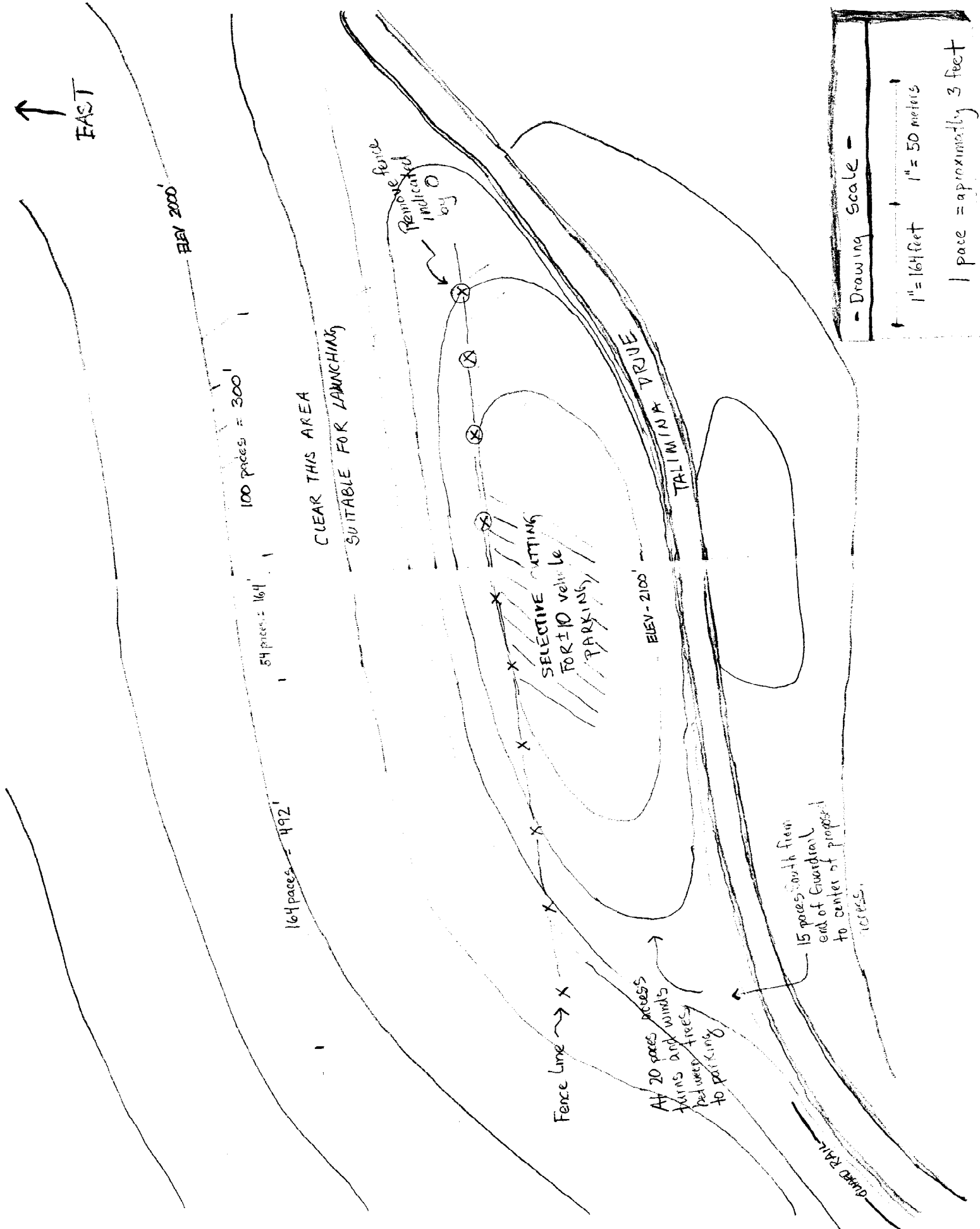
At 20 paces  
turns and winds  
between trees  
to parking

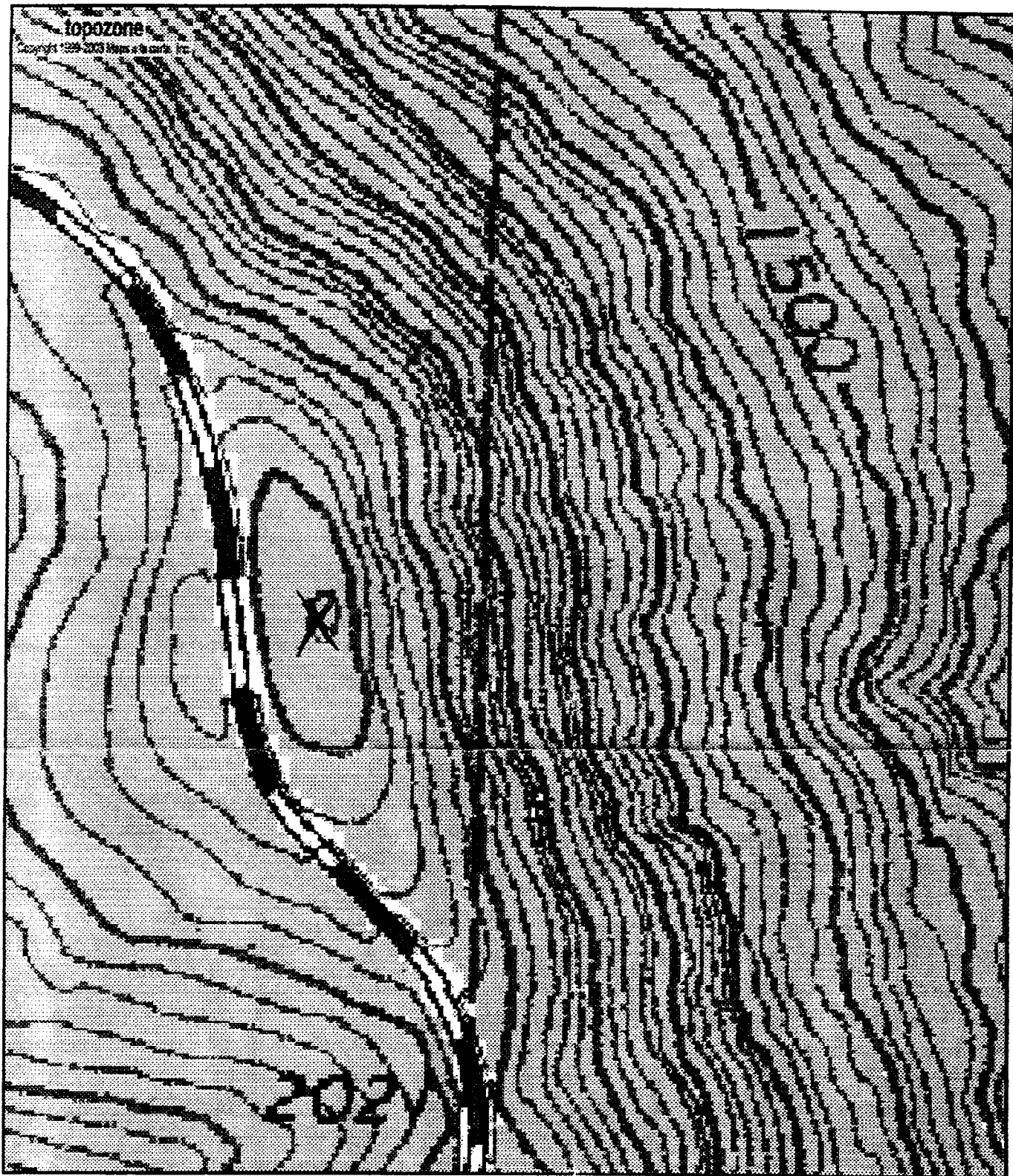
15 paces south from  
end of Guardrail  
to center of proposed  
access.

- Drawing Scale -

1" = 164 feet    1" = 50 meters

1 pace = approximately 3 feet





0 0.07 0.14 0.21 0.28 0.35 km

0 0.04 0.08 0.12 0.16 0.2 mi

UTM 15 325957E 3851717N (NAD83/WGS84)

**USGS Blackjack Ridge (OK) Quadrangle**

Projection is UTM Zone 15 NAD83 Datum

M=3.206  
G=-1.086